

1
 L1.1
 PLAN-
 PHARMACY 2112
 1/2" = 1'-0"
 ARCH REF: A1.1

CUSTOMER NAME
 &
PROJECT DATA HAS BEEN REMOVED
 MILLWORK * CASEWORK * FIXTURING

NOTES
 NO. 1

REVISIONS NO.	DESCRIPTION	DATE	BY
-	-	-	-

DESIGNER AND ARCHITECT

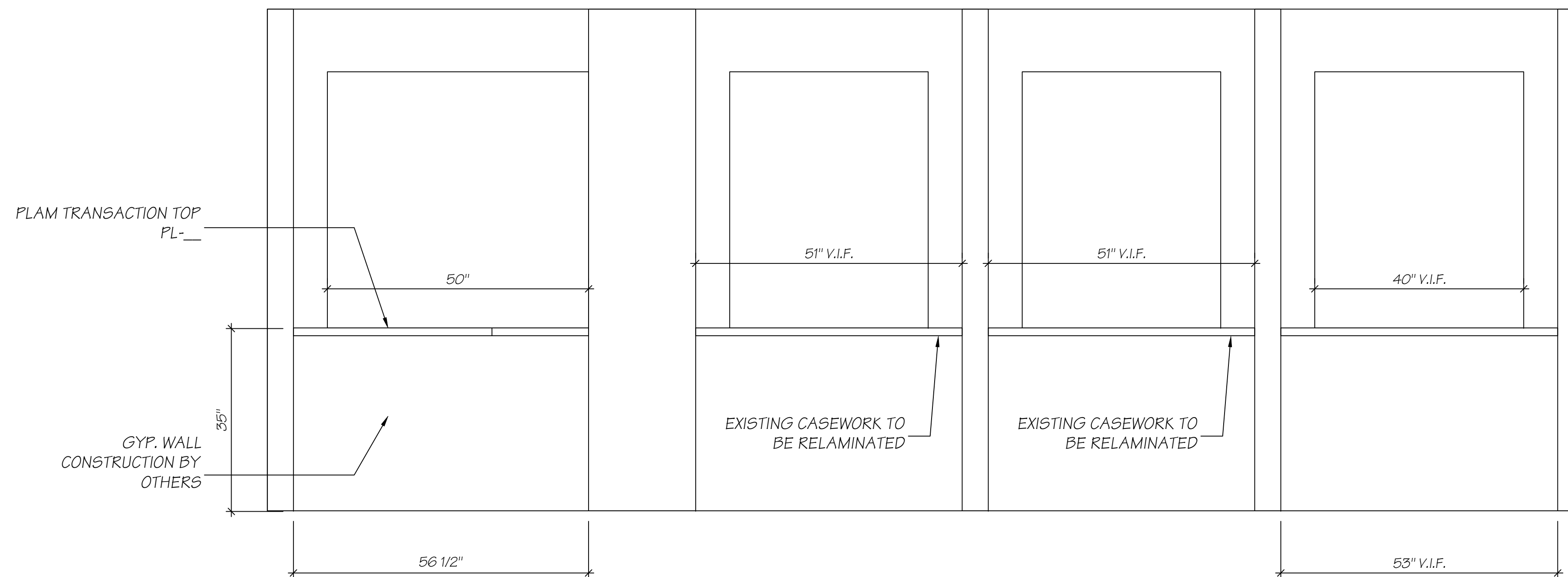
GENERAL CONTRACTOR

PROJECT
 UNIVERSITY HEALTH CENTER
 AND RESEARCH HOSPITAL

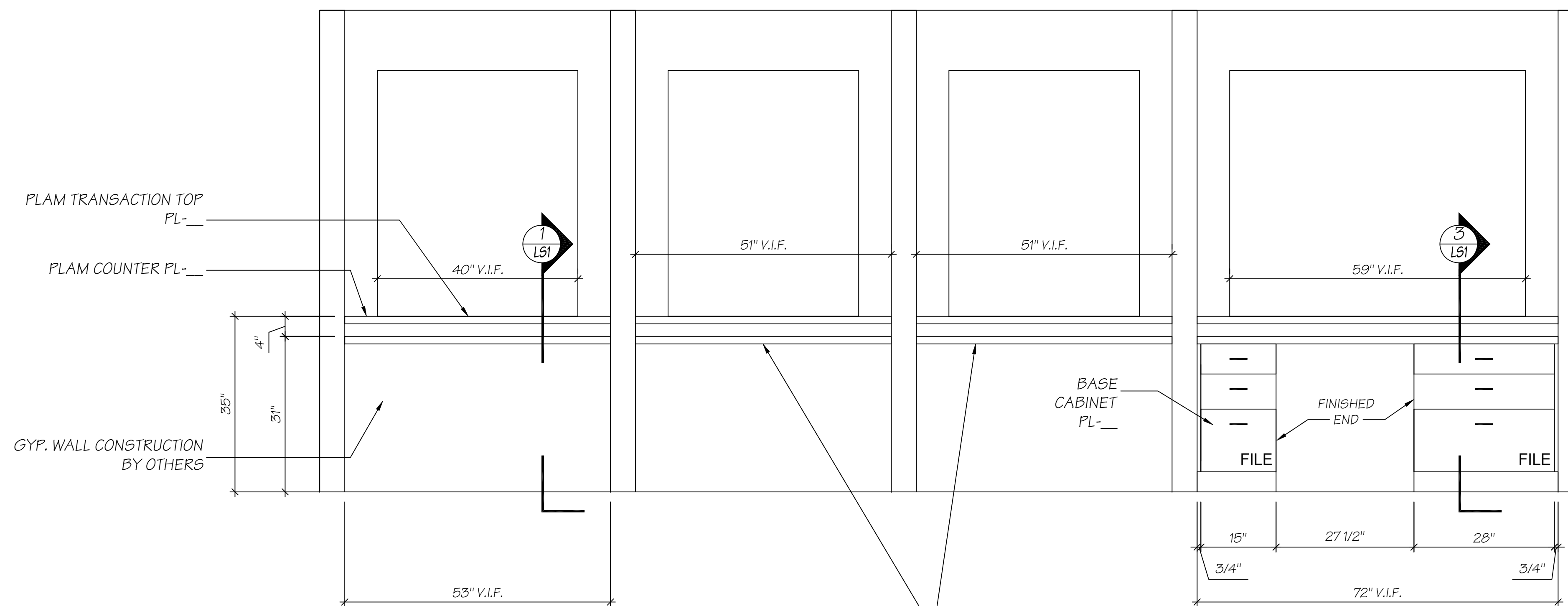
SUBJECT
 PLANS & ELEVATIONS
 PHARMACY 2112

DATE 06-27-08
 SCALE 1/2" = 1'-0"
 DRAWN BY TMD
 CHECKED BY

PROJECT NO. -
 DRAWING NO. L1.1



1
ELEVATION-
PHARMACY 2112
3/4" = 1'-0"
ARCH REF: 31A-5.2



2
ELEVATION-
PHARMACY 2112
3/4" = 1'-0"
ARCH REF: 22/A-5.1

CUSTOMER NAME
&
PROJECT DATA HAS BEEN REMOVED
MILLWORK * CASEWORK * FIXTURING

NOTES
NO. 1

REVISIONS NO.	DESCRIPTION	DATE	BY
-	-	-/-/-	-

DESIGNER AND ARCHITECT

GENERAL CONTRACTOR

PROJECT
UNIVERSITY HEALTH CENTER
AND RESEARCH HOSPITAL

SUBJECT
PLANS & ELEVATIONS
PHARMACY 2112

DATE 06-27-08
SCALE 3/4" = 1'-0"
DRAWN BY TMD
CHECKED BY

PROJECT NO. -
DRAWING NO. L1.2

